

Franklin Field Association Newsletter



MAY 2011

EXECUTIVE BOARD

President	Herb Raffelson
Vice President	Ellie Forman
Treasurer	Barbara Weinberger
Secretary	Phyllis Spiro

BOARD OF DIRECTORS

Chet Block
Loretta Chandler
Phyllis Fuld
Arthur Kagno
Elaine Kagno
Rita Libman
Barry Linsky
Evelyn Nessen
Manny Richman
Dottie Rosenberg

- * Gerson "Gus" Blaustein
- * Eddie Mandell
- * Arline & Harvey Kawadler
- * Bert Nessen
- * Boni Winick
- * Mel Kramer

CONDOLENCES

Our condolences to the family of Richard "Dickie" Klayman from, Anne (Ruben) and Tom Rivers.

Our heartfelt sympathy goes out to the family of and friend's of Ronnie (Cohen) Podell from, Leatrice And Eddie Miller.

Condolences to Toby, Ronnie and Michael Kramer and their families. Mel was a great friend and left much too soon. We miss him dearly from, Elaine and Ron Slovin.

Deepest condolences to the family and children, Amy, Eugene and Jonathan of Ronnie (Cohen) Podell of Boynton Beach, Fl. from special friends, her Capeway Sisters. She will be missed by many others as well as me, Rita (Kaplan) Libman.

Our heartfelt condolences to Evelyn Nessen and her family on the loss of their husband and father Bert Nessen. The FFA will miss their President and we will miss our dear friend! Our prayers are with Evelyn and her family. Selma and Syd Engler.

MESSAGE FROM OUR PRESIDENT

Dear Members,

It is my honor and pleasure to have been elected as President of the FFA, I will do everything in my power to continue to promote and maintain a social association for the men and women who have their roots in Dorchester, Roxbury and Mattapan.

As you know, we have no annual dues. Our members pay a lifetime membership fee of \$10.00. In order for us to maintain the ever-increasing costs of producing our newsletter, holding social events, etc. I am asking you to please donate whatever you can to help defray these necessary expenses. Every dollar will help maintain our organization. As you know, board members all serve on a voluntary basis.

We are in the planning stages for our 25th Anniversary party, to take place in 2013, plus several other events that will take place before that. We will keep you informed as plans firm up. Please support us in our endeavors.

There are a few vacant seats on our board, we would be delighted if you would consider joining our efforts to keep FFA alive and kicking. The meetings are once a month and your time would be valuable to the board.

That's the story for now, again may I ask you to please send in whatever donations you can afford and also please send in pictures with names from the Dorchester/ Roxbury/ Mattapan days of old that we can include in our newsletter.

Sincerely,
Herbie (Rae) Raffelson

GET WELL

To our dear friend Sandy Wilensky, our love and very best wishes for a speedy recovery from your illness.
From Elaine and Ron Slovin

Get well to my favorite brother in law, Clint Israel,
From Phyllis Fuld.

Gary Sheinfeld is being treated for Stage 4 throat cancer. Our best wishes go out to him.

Speedy recovery to Don "Buzzy" Zide from his recent surgery, from Anne (Ruben) and Tom Rivers.

Speedy recovery to Clint Israel, my favorite Marbleheader, from Phyllis Spiro.

HONORING THE MEMORY OF OUR PRESIDENT AND FRIEND

BERT NESSEN

How do we describe him, loving, dedicated, warm sincere, caring and sweet. These are just a few of many adjectives to what a man he was.

As long as I've known him, I found Bert to be the most lovable guy you ever want to know, except at our FFA board meetings, he was different. When a meeting became out of order, Bert just looked and all of a sudden everyone was shah shtill.

Bert would bend over backwards for anyone who needed a favor. His dedication not only to his loving family, but he had the same feeling for the FFA.

He was a remarkable President in every aspect of the word.

Last Tuesday when I visited with him, I told Bert we haven't had a meeting for along time, his answer to me was the FFA will always go on, get to it and keep this going, that was Bert.

When ever he was asked, hey buddy how you feeling, his answer was always the same, I'm fine, he never ever complained.

Even the attendants at the Rehabilitation hospital loved him dearly. Why, because he never wanted to bother any one. By the way they also thought he was hot.

Boychick, may you rest in peace, we love you, you'll always be in our hearts.

God Bless you.

By Herbie Rae Raffelson

EDITORIAL

FRANKLIN FIELD ASSOCIATION SPECIAL EDITORIAL

On March 11, 2011, we were saddened to learn that our President Bert Nessen and editor of the FFA newsletter has passed away after a long illness. We send our sincerest condolences to his wife Evelyn and his family. He loved this position and took it very seriously when leading us, the board, at the meetings and supervising plans for all functions. He took a lot of pride in putting together the newsletter with old photos of members and names of contributors, who sent in donations to keep your newsletter coming to you 3 times a year. Every article that you our members sent in meant so much to him. Happenings, Birthdays, Anniversaries, Births, Graduations, upcoming School reunions, especially informing members of Franklin Field Associations Functions that so many of you have attended these past 23 years.

We intend to keep his legacy going with your support and look forward to reaching you soon.

Most appreciative to you Bert,

Rita (Kaplan) Libman

NOTES FROM OUR MEMBERS

WE are on the move again, close to our children and beautiful grandchildren. Thanks for all the hard work keeping us up to date on Franklin Fielders. From Judy (Kuperman) and Richard Abrams.

Sherman Miller, founder and President of Multicom, Inc. Has been appointed to the Board of Directors of the World Trade Center, Orlando. Marilyn and Sherman are the proud grandparents of eight grandchildren.

To our family and friends, words cannot express how grateful we are for your love and support during difficult times. Thank you all so very much. From Elaine and Ron Slovin.

We love receiving the newsletter, you guys do a great job! Dodo (Baker) and Erwin Levine.

Geoffrey R. Sheinfeld M. D. son of Gary Sheinfeld is now active medical staff at Massachusetts General Hospital and Harvard Medical School.

visit us on our
WEBSITE
franklinfieldassociation.org

DONATIONS

Judy and Richard Abrams
Nathana Berman
Richard Barrows
Stan and Carole Charloff
Selma and Syd Engler
Ellie Forman
Phyllis Fuld
Harriet and Richard Gardner
Jerry Ginsberg
Elliot and Doris Hershoff
Jerry and Barbara Kawadler
Erwin and Dorothy Levine
Leatrice and Eddie Miller
Herb Raffelson
Anne and Thomas Rivers
Dottie and Gerry Rosenberg
Ruth Sandler
Barbara and Sonny Shapiro
Phyllis Spiro
Rita and Buzzy Zide

Mequon, Wi.
Tamarac, Fl.
Boynton Beach, Fl.
Boynton, Beach, Fl.
Norwood, Ma.
Canton, Ma.
Stoughton, Ma.
Holbrook, Ma.
Jamaica Plain, Ma.
Peabody, Ma.
Norwood, Ma.
Delray Beach, Fl.
Delray Beach, Fl.
Easton, Ma.
Malden, Ma
Canton, Ma.
Stoughton, Ma.
Stoughton, Ma.
Norwood, Ma.
Boynton Beach, Fl.

“A VERY SPECIAL THANK YOU TO”

Sherman G. Miller
Elaine and Ron Slovin
The Indians

Winter Park, Fl.
Natick, Ma.
Natick, Ma.

NEW MEMBERS

"The F.F.A. would like to extend a warm welcome to the following new members"

Martin Adwin
Arlene Fox
Sondra Miller

Pittsford, N.Y.
Stoughton, Ma.
Somerville, Ma.

MAZEL TOV TO

Hikey and Bob Summerfield on the marriage of Larry Pitchel to Kelly Jacob, from Phyllis Fuld.

Phyllis and Dick Sundook on the marriage of their daughter Ellen to Robert Goff from Phyllis Fuld.

Hikey and Bob Summerfield on the birth of grandson Max, from Phyllis Fuld.

Judy Glick Wolfe on the engagement of granddaughter Lauren Ashley Wolfe to Peter Keigley, they will be moving to Saratoga, N.Y.

Rita Libman of Delray Beach, Fla. and Alan Libman Of Weymouth , Ma. On the High School Graduation of their twin grandchildren Jenna and Brandon Ahearn, children of Andrea Libman. They intend to continue with their education. Congratulations to Brian Upperman, husband of Samantha who will be graduating from N. E. School of Law.

Barbara and Jerry Kawadler send congratulations to grandson Jared, who is a senior at Bentley University, and was captain of their football team. He was named by ESPN as a first team scholastic all American in football, in their small college division.

Nathana Berman of Tamarac, Fla. celebrated the Bat Mitzvah of her granddaughter Shamber in Bellvue, Wa. Shamber is a member of the Pacific Northwest Ballet Co., where she danced in the Nutcracker and Sleeping Beauty. She is the daughter of Kathleen and the late Jeffrey Goldstein.

Ellie (Heffron) Forman is proud to announce the H.S. graduation of her grandson Benjamin Forman, son of Cary & Bruce Forman. Benjamin will be attending Union College.

MAIL TO: FFA PO Box 184 Stoughton, MA 02072

I HAVE A HAPPENING

You will get more enjoyment out of the newsletter when you share your happenings with all of us.

Franklin Field Association



BUSINESS CARD ADVERTISEMENT

WE ENCOURAGE OUR MEMBERS TO SUPPORT OUR ADVERTISERS

*Schlossberg
& Saloman*

824 Washington Street
Canton, MA 02021
781-828-6990, 800-828-6993
schlossberg@conversent.net

Call us about our
Peace of Mind Pre-Need Program



The South Shore's only Jewish
Family Owned Memorial Chapel
under the direction &
ownership of Louis Schlossberg

Remember
AND
Celebrate Life

www.schlossbergchapel.com

Chet Block TEL. (617)277-5148
FAX (617)522-5030



INTERNATIONAL
TRAVEL
ADVISORS

World-Wide Travel Specialist

- TRAVEL'N TOURISM
- TOUR DIRECTOR(S)
- FULL SERVICE CONSULTANT
- LECTURER

50 Pleasant St. Suite 2-C
Brookline, MA 02446 USA
H617-277-5148 C617-650-7460



Herbie Rae

(508) 230-0183



Vocals



Bass



Franklin
Field
Association

OFFICE: (617) 745-9898
NEXTEL: (617) 590-9031
FAX: (617) 745-0707

RICHMAN CORPORATION
Plumbing

SCOTT RICHMAN 65 LIBERTY STREET
PRESIDENT QUINCY, MA 02169

Photos by Sheryl

Sheryl Iandoli 508-339-9984
Siandoli@comcast.net 774-306-2075
PhotosbySheryl.com Mansfield, MA

**Business card advertising
in the
F.F.A. Newsletter**

We will allocate space in our publication for your Business Card Ads. The price for Business Cards size ads in two (2) issues of the F.F.A. is \$30.00 annually.

This venture will prove mutually beneficial for our Business Friends and will help the F.F.A. defray the cost of publishing our newsletter. We encourage our members to patronize our Advertisers.

Edwin Case Comfort Shoes
"Problem Feet are No Problem Here"

Herb Raffelson
Manager

1388 Beacon St.
Brookline (Coolidge Corner)
On T Greenline C Train

617 277 6577
AAA-EEE Men & Women
10-6 Daily, Sat. 9:30-5:30
Parking

SAS
Extra Depth - Diabetic



Paul E. Saperstein

617/227-6553 Main
781/986-7202 x15 Direct
781/767-9686 Fax
144 Centre Street
Holbrook, MA 02343-1011
www.pesco.com

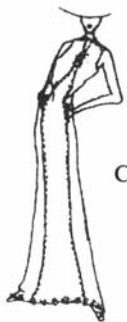


117 Sharon Street • Cobb Corner • Stoughton, MA 02072
Phone (781) 341-1662 • Fax (781) 341-2883
www.maxiesdeli.com

**Business card advertising
in the
F.F.A. Newsletter**

We will allocate space in our publication for your Business Card Ads. The price for Business Cards size ads in two (2) issues of the F.F.A. is \$30.00 annually.

This venture will prove mutually beneficial for our Business Friends and will help the F.F.A. defray the cost of publishing our newsletter. We encourage our members to patronize our Advertisers.



**Timmy the Tailor
& Dry Cleaners**

Professional Tailoring & Alterations
For Men and Women
Custom Made Evening Wear, Suits, Shirts & Pants
ALL WORK GUARANTEED
Open 7:30 a.m. - 7 p.m. Mon - Sat
324 North Main Street • Randolph, MA 02368
Tel. 781-986-9900

**W
e
n
c
o
u
r
a
g
e
o
u
r
m
e
m
b
e
r
s
t
o
s
u
p
p
o
r
t
o
u
r
a
d
v
e
r
t
i
s
e
r
s**



KE PRINTING & GRAPHICS

TEL. 781-828-9030 • FAX 781-828-6190
956 TURNPIKE STREET • RT 138 • CANTON, MA 02021
web site www.keprinting.com • e-mail info@keprinting.com



Old Style Cakes
THE CAKE STYLISTS

Carl D. Davis
National Sales Manager
Carl@OldStyleCakes.com

P.O. Box 740668
Boynton Beach, FL 33474-0668
Tel: 866-606-1122
Fax: 866-606-2211
www.OldStyleCakes.com



Joseph H. Nadler
Chairman

22 Park Place Butler, NJ 07405
(800) 347-0288 • (973) 492-2525
Fax (973) 492-0303
www.happychefuniforms.com

SIMON & SONS

Quality Boys & Mens Clothing Since 1905

Arthur M. Simon

210 Needham Street • Newton, MA 02464
617-969-8844 • Fax 617-969-2285

Mon, Tues, Fri & Sat 10AM-6PM • Wed & Thu 10AM-8:30PM • Sun 12-5PM

Stamps - Coins
Gold - Silver
Paper Money



J.M. Stone
Hub Stamp & Coin Co. Inc.
P.O. Box 2648
Westwood, Mass. 02090
781-769-4574

Appraisals for Estates
Investment Counseling



◀ L/R: Back Row: Betty Frankel, Rhonda Rosenberg Klayman, Judy P., Phyllis Finkelstein Fuld, Franny Sternberg, Lorraine Smith, Sylvia Shrottman Cohen
L/R: Front Row: Phyllis G., Beverly Furman Kaunfer, Thelma Kaufman Sirkin, Not Known



▲ L/R: Marty Spiro, Chet Enbinder, Bunny Sternberg Curwin, Marilyn Sidell Tepper



▲ L/R: Eddie Bluestein, Not Known, Bob Flink, Sonny Paige, Louis Salett



◀ L/R: Ethel (Gilbert) Curlop, Eddie Curlop, Rita (Kaplan) Libman, Barry Linksy, Elaine (Elfman) Linksy

IN MEMORY OF

In Memory of Bert Nessen, from Barbara and Sonny Shapiro

In Memory of our good friend Melly Kramer. We miss our daily conversations on every topic, from the baseball to tennis to politics to music. Thanks for the memories and for being a great friend, from Elaine and Ron Slovin.

In loving memory of our dear friend Bert Nessen, from Harriet and Richard Gardner.

In memory of Bert Nessen, one terrific president, From Phyllis Spiro.

In memory of Nate Glick, my condolences to Marilyn, and his brother in law Myles Israel, from Phyllis Spiro

In memory of Aaron Blaustein, my condolences to his family, from Phyllis Spiro.

In memory of Jordan "Yossy" Shatz. Wonderful Friend and club member (Indians). We will miss his smiley face and great sense of humor, from Ron Slovin/ The Indians.

In Loving memory or our dear friend Richard "Dick" Klayman, from Carole and Stan Charloff.

In loving memory of our dear friend, Richard "Dick" Klayman, from Rita and Buzzy Zide.

In memory of Ronnie Podell, my friend and "Capeway Sister" with condolences to her family, from Ruth Sandler.

In memory of our President and friend Bert Nessen, you will be truly missed, from Phyllis Fuld.

In memory of Bert Nessen from Ellie Forman

In memory of Bert Nessen from Dottie and Gerry Rosenberg

In fond memory of boychick, Bert Nessen, love you Herbie Rae Raffelson.

In memory of our departed members:

Donald Aronson	Arnie Hirsh
Malcolm "Babe" Berman	Arkie Kongsberg
Joe Cohen	Paul Motel
Jason Epstein	Steve Rodman
Albie Freedman	Jordan "Yossy" Shatz
Gerry Gelbsman	Wilbur Slarve
Bob Greengross	

What great times we had
Ron Slovin/ The Indians

"TRAVEL TRIPS" BY CHET

In my previous travel columns of "Travel Trips by Chet", I indicated the planning and some important guidelines of vacation travel, to the best way of planning a vacation destination, and in my last column, I highlighted a specific destination and the way to get there—an Alaska cruise.

In this column of "TRAVEL TRIPS", I am directly going to those who grew up "down the breath and length of Roxbury, Dorchester and Mattapan's Blue Hill Ave. during the 30's, 40's and 50's (before spilling to suburbia). When we travel today, we are often asked "Where are you from???" You proudly answer from BOSTON!!! (Even if we live in the suburbs).

For the next ten questions---let's just find out how well you know your Hometown "BOSTON". If you can answer at least (8) out of (10) of the following questions you will 'WIN' a one (1) year monthly subscription of BOSTON Magazine. (refer to the end of this "travel tips column".)

- (1)What is considered the birthplace, (the facility) of the FFA?
- (2)What or where is considered our trademark/symbol?
- (3)Where in Boston can you look up and see a "Gilded Grasshopper weather vane?"
- (4)What day is Prince Spaghetti Day and where???
- (5)What holiday is celebrated on March 17, (besides St. Paddy's Day)?
- (6)Finish the slogan and you name the advertiser "It's not just ice cream, it's _____." (hint: Mattapan Sq.)?
- (7)Where can you see a 40 foot tall model of a Hood's milk bottle?
- (8)Which tunnel is free, The Sumner or the Callahan?
- (9)Why is Boston Cream Pie poorly named?
- (10)It used to be called Scollay Square, now it's _____?

Submit your answers directly to: Chet Block c/o I.T.A.
50 Pleasant St. Suite 2C, Brookline, Ma. 02446-3707
(It is suggested to keep a copy of what you submit.)
GOOD LUCK

ANNIVERSARIES

25th Mary & Hank Greenberg of
Sharon, Ma.

visit us on our
WEBSITE
franklinfieldassociation.org

FFA COMING EVENTS

The Committee is busy looking for a location to run our 25th anniversary reunion in May or September 2013. So, please watch for the date and location, we are hoping for a very large turn out for this affair.

We are looking into a card party, and a trip to the Newport Playhouse.

We will also post all affairs on our web-site so you can view it on:

franklinfieldassociation.org



Visit us on our
WEBSITE
franklinfieldassociation.org



Franklin Field Association
P.O. Box 184
Stoughton, MA 02072